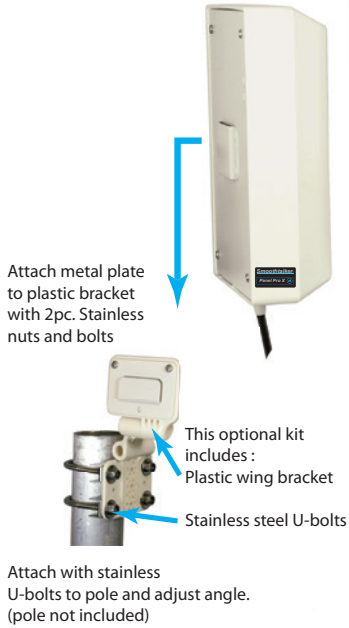


Pole Mount Bracket Kit (Option)
(not included)

NOT INCLUDED IN ANTENNA KIT
Must BUY separately Part # SRDP1BRss



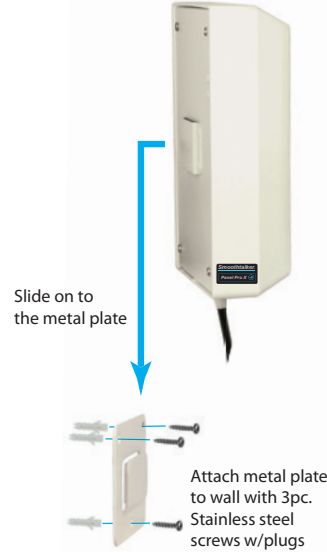
Window Mount
(included)

Assemble antenna and bracket as shown and attach to window where signal is strongest



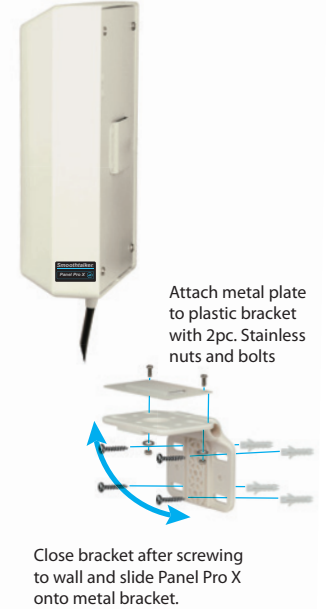
Wall Mount Option 1
(included)

Attach metal plate to wall. Slide the Panel Pro X on to the metal plate



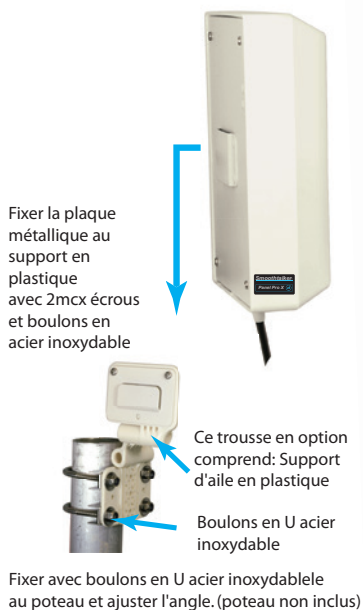
Wall Mount Option 2
(included)

Attach metal plate to plastic bracket and attach to wall. Slide the Panel Pro X on to the metal plate



Trousse Support Montage Poteau (Option)
(non inclus)

NON INCLUS DANS LE TROUSSE D'ANTENNE
doit ACHETER séparément n° Pièce SRDP1BRss



Montage Fenêtre (inclus)

Assembler l'antenne comme indiqué et attacher à la fenêtre où le signal est le plus fort.



Montage Mural Option 1 (inclus)

Fixer la plaque métallique au mur. Faire glisser le Panel Pro X sur la plaque métallique



Montage Mural Option 2 (inclus)

Fixer la plaque métallique au support en plastique et fixer au mur. Faire glisser le Panel Pro X sur la plaque métallique

